

DMSi INSTALLATION GUIDE – SERVER

Microcat EPC has the ability to integrate with your Dealer Management System (DMS) using the Infomedia DMSi application. Transferring orders directly to your DMS saves time, reduces errors and streamlines operations within your dealership.

The Infomedia DMSi must be installed and configured to enable the integration between Infomedia products and the DMS. When you install the Infomedia DMSi 8, all previous DMSi settings will be retained.

If you use an older version of the DMSi (v5/v6), the DMSi settings (xml files) must be manually copied. Use Windows File Explorer to copy and paste the files from the location below:

- ▶ **From:** %appdata%\Infomedia\Infomedia DMSi
- ▶ **To:** C:\DMSiConnection\Infomedia\Infomedia DMSi\DMSi8

The Infomedia DMSi requires the Microsoft .NET Framework (latest version) and will automatically include the Microsoft .NET Framework in the DMSi installation, if required.

To install the Infomedia DMSi:

- 1 Go to this website: <https://dmsi.autopartsbridge.com/ui/DMSi/publish.htm>.
- 2 Select the language from the drop-down.
- 3 Locate the download link for the server installation at the bottom of the page and click the **link** to download the application file.

The Infomedia DMSi application will be downloaded.

- 4 Click the **DMSi Service** file to open it and start the installation.
- 5 Click **Install**.

The installation may take several minutes.

- 6 When prompted, enter your user name and password.

Use the same login credentials that you use to log into Microcat EPC.

- ▶ If you use Single Sign-On (SSO) to log into Microcat EPC, select the **Use Access Code** checkbox and paste the access code into the **Access Code** box.

You can get the access code from the **Integration** tab in the Microcat EPC Settings screen.

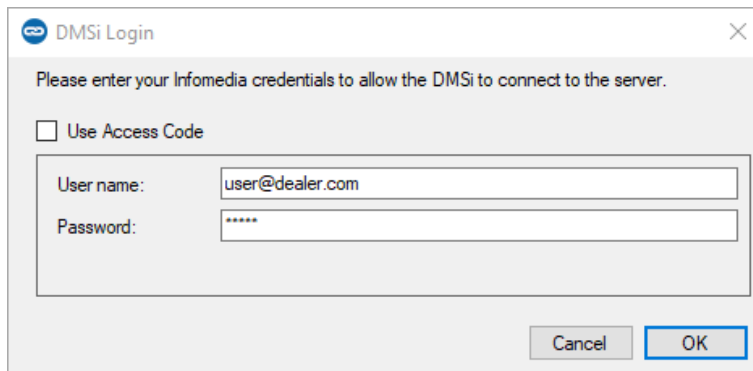
Copy the access code below and paste it into the Access Code text box in the DMSi Login screen.


Access Code

cHN0MzE5OEBuaXNzYW5ldXJvcGUtc2FtbC5jb206MDc2NjNEODQ
5RTE0QjI2QkY4RDVfQjVEMDA2ODhEQjc3NDg5MzBDQTpkbXNp



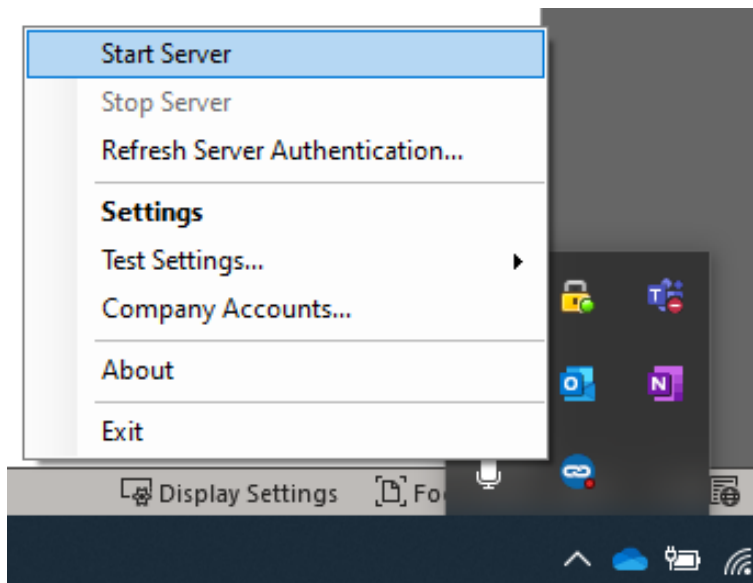
- 7 Click **OK**.




- 8 Right-click the Infomedia DMSi 8  icon in your taskbar and select **Settings**.
- 9 Confirm the **Available Connections** display in the **Integration Settings** window of the DMSi application.



This confirms that the previous DMSi settings have been retained.

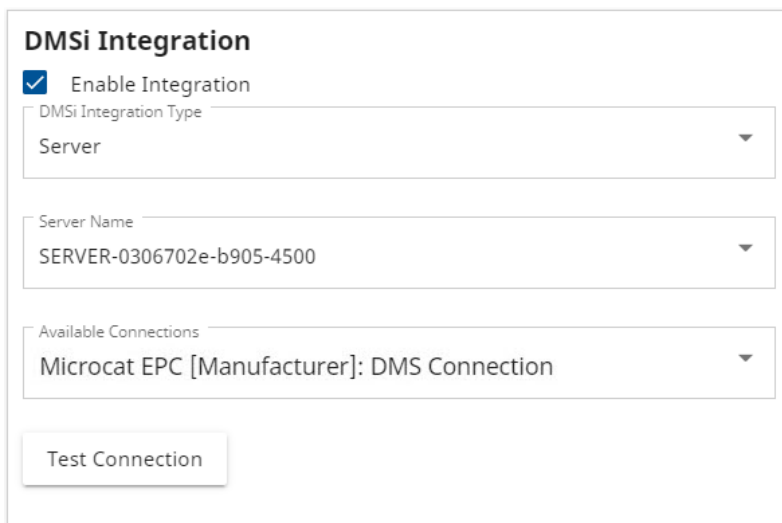
- 10 Navigate to the taskbar, right-click the DMSi  icon and then select **Start Server**.



- 11 When the server is running, the DMSi icon will turn green .

To set up the DMSi integration within Microcat EPC:

- 1 Access Microcat EPC, click the  icon and select **Settings**.
- 2 Select the **Integration** tab and view your DMSi Integration settings.
- 3 Click the **New DMSi Application** icon  to activate the new DMSi.
- 4 Select **Server** from the **DMSi Integration Type** drop-down.
- 5 Select your server from the **Server Name** drop-down.
- 6 Select your DMS connection from the **Available connections** drop-down.
If you have multiple DMS connections, you must select the required connection.



DMSi Integration




Enable Integration


DMSi Integration Type
Server

Server Name
SERVER-0306702e-b905-4500

Available Connections
Microcat EPC [Manufacturer]: DMS Connection

Test Connection

- 7 Click  to ensure a successful connection with the DMSi.
 - 8 Close the Settings window.
 - 9 Click the DMSi icon  to ensure a successful connection with the DMSi .
- You are now ready to transfer parts to your DMS.

- ▶ To check your DMSi settings, right-click the Infomedia DMSi 8  icon in your task bar and select **Settings**.
- ▶ For more information on DMS integration, contact Customer Service:
<https://www.infomedia.com.au/contact/customer-support>.